



Lower Platte River
CORRIDOR ALLIANCE

LEAD. ORGANIZE. INSPIRE.
The voice of the Lower Platte.



2024 - 2029 REVISION TO THE WATER QUALITY MANAGEMENT PLAN
for The Lower Platte River Corridor Alliance

Approved in September, 2024

2024 – 2029 Revision to the Water Quality Management Plan for the Lower Platte River Corridor Alliance

This document constitutes a revision and amendment to the 2019 – 2024 Water Quality Management Plan for the Lower Platte River Corridor Alliance (LPRCA), which includes the Lower Platte – Shell, Lower Platte, Salt and Lower Elkhorn Hydrologic Unit Code 8 (HUC 8) watersheds, hereinafter referred to as the “LPRCA Watersheds”. This amendment will be attached to the original LPRCA Water Quality Management Plan upon finalization. The Water Quality Management Plan, including this revision, is intended to serve as a coordination guide for the Lower Platte River Corridor Alliance, conservation organizations, communities, and educational institutions to plan and implement water quality management projects in the LPRCA Watersheds. It is expected that potential project sponsors will communicate and coordinate their activities in the LPRCA Watersheds with the key partners in the plan, including the Papio-Missouri River NRD (Papio NRD), Lower Platte North NRD (LPNNRD), Lower Platte South NRD (LPSNRD), and Nebraska Department of Environment & Energy (NDEE). Other plan stakeholders and members of the LPRCA include the Nebraska Department of Natural Resources (DNR), Nebraska National Guard and Camp Ashland, University of Nebraska-Lincoln (UNL), Nebraska Game and Parks Commission (NGPC), and the United States Geological Survey (USGS).

Highlights of Accomplishments 2019-2024

In 2023, the LPRCA began scoping monitoring well installation in Springfield, Nebraska. Monitoring well clusters will be installed upstream and downstream of the City of Springfield’s Wellhead Protection Area (WHPA) to monitor the baseline nitrate conditions in the soils and groundwater. The LPRCA will also coordinate with the City of Springfield to implement Urban Stormwater BMPs such as bioswales, rain gardens, and improved pet waste and soil health management to reduce the introduction of nitrate into the WHPA. This project is part of the Lower Platte River Water Quality and Springfield, NE Drinking Water Protection Management Implementation: Phase 1 Project.

The mission of the LPRCA is to foster the development and implementation of locally drawn strategies, actions, and practices to protect, enhance, and restore the vitality of the Lower Platte River’s resources. The LPRCA continues to meet semiannually to coordinate and plan efforts to support this mission, where the Water Quality Management Plan is a key focus. Meetings involve a variety of public agencies and private consultants, who regularly give Lower Platte relevant updates from their respective organizations. Beyond the Water Quality Management Plan, the programs and projects discussed involve active studies (e.g. USGS Stream Gauges, Stream Cameras, Trend Analyses), ongoing projects (e.g. Platte River Railroad Obstruction) and future work (e.g. LPNNRD Drainage Project with Dodge County and City of Fremont, Lower Platte River Aquatic Ecosystem Restoration Comprehensive Study Update). The LPRCA also conducts outreach activities, such as an airboat tour of the Lower Platte River in 2023. The group continues to grow and complete impactful water and environmental work in the Lower Platte River area.

Amendments to the Water Quality Management Plan 2024 – 2029

1. The Water Quality Management Plan for the Lower Platte River Corridor Alliance is amended to extend from **TBD**, 2024 through **TBD**, 2029. Goals, objectives, tasks, priorities, and other actions, with the exception of those amended in this document, continue as guidance for implementing nonpoint source management projects in the

LPRCA Watersheds. Priority watershed selection, load reduction data and significant land use data remain the same due to insignificant overall change in the LPRCA Watersheds.

2. All references to the Nebraska Department of Environmental Quality (NDEQ) are amended to the Nebraska Department of Environment and Energy (NDEE) reflecting the Department's name change.
3. On Page 17 the following statement is made:

The 2016 Nebraska Water Quality Integrated Report prepared by NDEQ identified both segments of the lower Platte River as impaired. Segment LP1–10000 is identified as impaired for aquatic life due to selenium and for a fish consumption advisory. LP1–20000 is identified as impaired for recreation due to *E. coli* (NDEQ, 2016).

The statement is amended to be the following (changes in red), as revised by subsequent publications of the Nebraska Surface Water Quality Integrated Report:

The 2020 Nebraska Water Quality Integrated Report prepared by NDEE identified both segments of the lower Platte River as impaired. Segment LP1–10000 is identified as impaired for Recreation use due to *E. coli* bacteria, impaired for Aquatic Life use due to a Fish Consumption Advisory for Hazard Index Compounds and impaired for Public Drinking Water Use due to Arsenic. LP1–20000 is identified as impaired for Recreation use due to *E. coli* bacteria and impaired for Public Drinking Water Use due to Arsenic (NDEE, 2020).

Note that no further changes to these waterbodies were reported within the 2022 Nebraska Water Quality Integrated Report. The addition of arsenic impairment is due to a 2019 revision of Nebraska's water quality standards which lowered the arsenic drinking water standard from 10 µg/L to 0.18 µg/L. The removal of selenium impairment for LP-10000 is due to an update of the Selenium assessment methods for acute water quality standards reflecting EPA's priority toxic pollutants method.

The 2020 Nebraska Water Quality Report is further appended to the References section on pages 83-84 as:

NDEE 2021, 2020 Surface Water Quality Integrated Report.

4. On Page 74 the following statement is made:
 - Loup River – Impaired for Recreation—bacteria; and Aquatic Life—fish consumption. A TMDL has been approved.
 - Elkhorn River – Impaired for Recreation—bacteria. A TMDL has been approved.
 - Salt Creek – Impaired for Recreation—bacteria; Aquatic Life—Ammonia, Chloride; Fish consumption advisory; Impaired aquatic community; Agriculture Water Supply—conductivity. A TMDL has been approved.

The statement is amended to be the following (changes in red), as revised by subsequent publications of the Nebraska Surface Water Quality Integrated Report:

- Loup River – Impaired for Recreation—bacteria. A TMDL has been approved.

- Elkhorn River – Impaired for Recreation—bacteria. A TMDL has been approved.
- Salt Creek – Impaired for Recreation—bacteria; Aquatic Life—Ammonia, Copper; Impaired Aquatic Community. A TMDL has been approved.

The 2022 Nebraska Water Quality Report is further appended to the References section on pages 83-84 as:

NDEE 2023, 2022 Surface Water Quality Integrated Report.

5. Schedule and Milestones (Table 16, Page 77) is revised to reflect the new project timeline. See **Attachment 1**. The narrative schedules on Pages 76 and ES8 are adjusted to reflect the new project timeline.
6. The following impairment tables from the 2022 NE IR Report are appended as an additional series of Tables under the Management Plan Implementation section. See **Attachment 2**.
7. On Page 74 the following statement is made regarding septic tank system replacement:

“If the homeowner wishes to upgrade to current design standards, the homeowner may request up to 60% reimbursement (not to exceed \$3,000) for the replacement of the system in addition to 60% reimbursement (not to exceed \$300) for pumping and inspection.”

Per NDEE’s current guidelines, the statement is amended as follows:

“If the homeowner wishes to upgrade to current design standards, the homeowner may request up to 60% reimbursement (not to exceed **\$15,000**) for the replacement of the system in addition to 60% reimbursement (not to exceed \$300) for pumping and inspection.”

The homeowner must still provide proof that the new system has been properly registered with NDEE.

8. On Page 64 under Management Initiative 2, a third bullet is added as follows:
 - Implement Voluntary Septic Tank Upgrade Program
 - Contributing Watershed Coordination Plan
 - **Implement Wellhead Protection Plan(s) (as applicable) within Wellhead Protection Areas (see Figure 9) as Special Priority Areas**
9. Figure 9, displaying the current Wellhead Protection Areas, is amended as shown in **Attachment 3**.

ATTACHMENT 1
REVISED TABLE 16. PLAN IMPLEMENTATION
MILESTONES

Table 16 (Amended). Plan Implementation Milestones

Milestone	1	2	3	4	5	6-10	11-20
	2024	2025	2026	2027	2028	2029-2035	2036-2046
Plan Re-Evaluation	Annually						
Implement Information and Outreach Strategies	Ongoing						
Identify funding for Priority 1 Watershed Implementation	X	X	X	X	X	X	X
Implementation of BMPs association with Priority 1 Watersheds				X	X		
Priority 1 Watersheds Composite <i>E. coli</i> load reduction					6.62E+16 CFU/ Year = 10% of Total Load Reduction Needed to meet TMDL goal at Louisville	TBD ¹	TBD ¹
Initiate Contributing Watershed Coordination Plan			X				
Identify funding for Voluntary Septic Tank Inspection Program		X	X				
Develop Details and Outreach Materials for Voluntary Septic Tank Inspection Program			X				
Perform first septic tank inspection			X				
Perform first cost-share septic tank remediation			X				
Watershed Plan Update (every 5 years)	X					X	X

¹As Priority I Watersheds are re-evaluated and assigned during Watershed Plan updates, the E. Coli load reductions will be calculated. The intent of full Watershed Plan implementation is to achieve the 1.49E+17cfu annual reduction needed at the Louisville gauge to achieve the TMDL limit.

ATTACHMENT 2
2022 NEBRASKA WATER QUALITY INTEGRATED
REPORT IMPAIRMENT TABLES

Waterbody ID	Waterbody Name	Recreation	Aquatic Life	Water Supply			Aesthetics	Overall	2022 IR	Impairments (Causes)	Comments/Actions
				Public Drinking	Agricultural	Industrial					
Lakes											
EL1-L0010	Highway 275 Bypass Lake No. 1	NA	NA		NA		NA	NA	3		
EL1-L0020	Highway 275 Bypass Lake No. 2	NA	NA		NA		NA	NA	3		
EL1-L0030	Highway 275 Bypass Lake No. 4 (Johnson Park Lake)	NA	S		NA		NA	S	2		Fish Consumption Assessment completed
EL1-L0040	Highway 275 Bypass Lake No. 3	NA	NA		NA		NA	NA	3		
EL1-L0050	Hooper City Lake	NA	NA		NA		NA	NA	3		
EL1-L0060	West Point City Lake (Neligh Park Lake)	NA	I		S		S	I	5	Aquatic Life - Fish Consumption Advisory (Mercury), Chlorophyll α (Total Nitrogen, Total Phosphorus)	Lake renovated 2004, Fish Consumption Assessment completed
EL1-L0070	Pilger Reservoir	NA	S		S		S	S	2		Fish Consumption Assessment completed
EL1-L0075	Red Fox Lake (WMA)	NA	S		NA		NA	S	2		Fish Consumption Assessment completed
EL1-L0080	Maskenthine Reservoir	S	I		S		S	I	5	Aquatic Life - Fish Consumption Advisory (Mercury), Chlorophyll α , pH (Total Nitrogen, Total Phosphorus)	Fish Consumption Assessment completed
EL1-L0090	Leigh Tri-County Lake	NA	NA		NA		NA	NA	3		
EL1-L0095	Maple Creek Recreation Area Lake	I	I		NA		NA	I	5	Recreation (<i>E. coli</i>), Aquatic Life - Fish Consumption Advisory (Mercury)	New Lake built in 2011, Fish Consumption Assessment completed
EL1-L0100	Wood Duck Lake (WMA)	NA	NA		NA		NA	NA	3		

Waterbody ID	Waterbody Name	Recreation	Aquatic Life	Water Supply			Aesthetics	Overall	2022 IR	Impairments (Causes)	Comments/Actions
				Public Drinking	Agricultural	Industrial					
EL1-L0110	Loes Lake (Wood Duck WMA)	NA	NA		NA		NA	NA	3		
EL1-L0120	Pillar Lake (Wood Duck WMA)	NA	NA		NA		NA	NA	3		
EL1-L0130	Wood Duck Pond (Wood Duck WMA)	NA	NA		NA		NA	NA	3		
EL1-L0140	Dead Timber Lake	NA	S		S		S	S	2		Fish Consumption Assessment completed
EL2-L0010	Lyons City Park Lake	S	NA		NA		NA	S	2		
EL2-L0020	Wayne Izaak Walton Lake	NA	NA		NA		NA	NA	3		
EL3-L0010	Willow Creek Reservoir	I	I		S		S	I	5	Recreation - Algae Toxins (Microcystin), Aquatic Life - Chlorophyll α , pH (Total Nitrogen, Total Phosphorus)	Fish Consumption Assessment completed
EL3-L0020	Pierce City Lake	NA	NA		NA		NA	NA	3		
EL4-L0005	Andy's Lake	NA	NA		NA		NA	NA	3		
EL4-L0010	Ta-Ha-Zouka Park Lagoon	NA	S		NA		NA	S	2		Fish Consumption Assessment completed
EL4-L0020	Skyview Lake	S	I		S		S	I	5	Aquatic Life - Chlorophyll α (Unknown)	TN and TP are supporting, Fish Consumption Assessment completed
EL4-L0025	Horseshoe Bend (Tilden City Lake)	I	S		S		S	I	5	Recreation (<i>E. coli</i>)	Lake renovated 2003
EL4-L0030	Antelope County Country Club Lake	NA	NA		NA		NA	NA	3		

Waterbody ID	Waterbody Name	Recreation	Aquatic Life	Water Supply			Aesthetics	Overall	2022 IR	Impairments (Causes)	Comments/Actions
				Public Drinking	Agricultural	Industrial					
EL4-L0040	Penn Park Lake (Neligh)	NA	S		NA		NA	S	2		Fish Consumption Assessment completed
EL4-L0050	Goose Lake	NA	I		NA		NA	I	5	Aquatic Life - Fish Consumption Advisory (Mercury)	Fish Consumption Assessment completed
EL4-L0060	O'Neill City Lake	NA	S		NA		NA	S	2		Fish Consumption Assessment completed
EL4-L0070	Atkinson Lake (SRA)	NA	I		NA		NA	I	5	Aquatic Life - Fish Consumption Advisory (Mercury)	Fish Consumption Assessment completed
EL4-L0080	Swan Lake	NA	S		NA		NA	S	2		Fish Consumption Assessment completed
EL4-L0090	Overton Lake	NA	S		NA		NA	S	2		Fish Consumption Assessment completed
EL4-L0100	Fish Lake	NA	S		NA		NA	S	2		Fish Consumption Assessment completed
EL4-L0110	Peterson Lake	NA	NA		NA		NA	NA	3		
EL4-L0120	Twin Lake R.C. - North Lake (WMA)	NA	NA		NA		NA	NA	3		
EL4-L0130	Twin Lake R.C. - South Lake (WMA)	NA	NA		NA		NA	NA	3		
Streams											
EL1-10000	Elkhorn River	I	S		S		S	I	4a	Recreation (<i>E. coli</i>)	Se 4C justification approved 3/09†, <i>E. coli</i> TMDL approved 9/09, Fish Consumption Assessment completed
EL1-10100	Unnamed Creek		NA		NA		NA	NA	3		

Waterbody ID	Waterbody Name	Recreation	Aquatic Life	Water Supply			Aesthetics	Overall	2022 IR	Impairments (Causes)	Comments/Actions
				Public Drinking	Agricultural	Industrial					
EL1-10200	Big Slough		S		NA		S	S	2		Aquatic Community Assessment completed
EL1-10300	Rawhide Creek		S		S		S	S	1		Aquatic Community Assessment completed
EL1-10400	Rawhide Creek		S		NA		S	S	2		Aquatic Community Assessment completed
EL1-10500	Rawhide Creek		NA		NA		NA	NA	3		
EL1-10600	Bell Creek		S		S		S	S	1		Aquatic Community Assessment completed
EL1-10610	Brown Creek		NA		NA		NA	NA	3		
EL1-10620	Little Bell Creek		NA		NA		NA	NA	3		
EL1-10630	Unnamed Creek		NA		NA		NA	NA	3		
EL1-10700	Bell Creek		I		NA		NA	I	5	Aquatic Life - Impaired Aquatic Community (Unknown)	Aquatic Community Assessment completed
EL1-10800	Unnamed Creek		NA		NA		NA	NA	3		
EL1-10900	Maple Creek	I	I		S		S	I	5	Recreation (<i>E. coli</i>), Aquatic Life - Impaired Aquatic Community (Unknown)	Se 4C justification approved 3/09†, E. Coli TMDL approved 9/09, Aquatic Community Assessment completed, Fish Consumption Assessment completed
EL1-10910	Crystal Creek		NA		NA		NA	NA	3		

Waterbody ID	Waterbody Name	Recreation	Aquatic Life	Water Supply			Aesthetics	Overall	2022 IR	Impairments (Causes)	Comments/Actions
				Public Drinking	Agricultural	Industrial					
EL1-10920	East Fork Maple Creek		S		S		S	S	1		Aquatic Community Assessment completed
EL1-10930	West Fork Maple Creek		S		S		NA	S	2		
EL1-10931	Dry Creek		NA		NA		NA	NA	3		
EL1-10931.1	South Fork Dry Creek		NA		NA		NA	NA	3		
EL1-10932	Dry Creek		I		NA		NA	I	5	Aquatic Life - Impaired Aquatic Community (Unknown)	Aquatic Community Assessment completed
EL1-10933	Unnamed Creek		NA		NA		NA	NA	3		
EL1-10934	Unnamed Creek		NA		NA		NA	NA	3		
EL1-10940	West Fork Maple Creek		I		NA		NA	I	5	Aquatic Life - Impaired Aquatic Community (Unknown)	Aquatic Community Assessment completed
EL1-11000	Clark Creek		NA		NA		NA	NA	3		
EL1-20000	Elkhorn River	I	S		S		S	I	4a	Recreation (<i>E. coli</i>)	Se 4C justification approved 3/09†, E. coli TMDL approved 9/09, Aquatic Community Assessment completed, Fish Consumption Assessment completed
EL1-20100	Pebble Creek	I	S		S		S	I	4a	Recreation (<i>E. coli</i>)	Se 4C justification approved 3/09†, E. Coli TMDL approved 9/09, Aquatic Community Assessment completed, Fish Consumption Assessment completed

Waterbody ID	Waterbody Name	Recreation	Aquatic Life	Water Supply			Aesthetics	Overall	2022 IR	Impairments (Causes)	Comments/Actions
				Public Drinking	Agricultural	Industrial					
EL1-20110	Silver Creek		NA		NA		NA	NA	3		
EL1-20120	Unnamed Creek		NA		NA		NA	NA	3		
EL1-20121	Unnamed Creek		I		NA		S	I	5	Aquatic Life - Impaired Aquatic Community (Unknown)	Aquatic Community Assessment completed
EL1-20130	Unnamed Creek		S		NA		NA	S	2		Aquatic Community Assessment completed
EL1-20200	Pebble Creek		NA		NA		NA	NA	3		
EL1-20210	South Branch Pebble Creek		NA		NA		NA	NA	3		
EL1-20220	North Branch Pebble Creek		NA		NA		NA	NA	3		
EL1-20300	Pebble Creek		NA		NA		NA	NA	3		
EL1-20400	Cuming Creek		S		S		NA	S	2		
EL1-20410	Willow Creek		NA		NA		NA	NA	3		
EL1-20500	Cuming Creek		NA		NA		NA	NA	3		
EL1-20600	Fisher Creek		NA		NA		NA	NA	3		
EL1-20700	Plum Creek		S		S		NA	S	2		

Waterbody ID	Waterbody Name	Recreation	Aquatic Life	Water Supply			Aesthetics	Overall	2022 IR	Impairments (Causes)	Comments/Actions
				Public Drinking	Agricultural	Industrial					
EL1-20800	Plum Creek		NA		NA		NA	NA	3		
EL1-20810	Dry Creek		NA		NA		NA	NA	3		
EL1-20820	Kane Creek		NA		NA		NA	NA	3		
EL1-20900	Plum Creek		S		NA		S	S	2		Aquatic Community Assessment completed
EL1-21000	Rock Creek	I	I		S		S	I	5	Recreation (<i>E. coli</i>), Aquatic Life - Impaired Aquatic Community (Unknown)	Aquatic Community Assessment completed
EL1-21100	Leisy Creek		NA		NA		NA	NA	3		
EL1-21200	Sand Creek		NA		NA		NA	NA	3		
EL1-21300	Humbug Creek		S		NA		S	S	2		Aquatic Community Assessment completed
EL1-21310	South Humbug Creek		S		NA		S	S	2		Aquatic Community Assessment completed
EL1-21400	Humbug Creek		NA		NA		NA	NA	3		
EL1-21500	Payne Creek		NA		NA		NA	NA	3		
EL1-21600	Cedar Creek		NA		NA		NA	NA	3		
EL1-21700	Indian Creek		NA		NA		NA	NA	3		

Waterbody ID	Waterbody Name	Recreation	Aquatic Life	Water Supply			Aesthetics	Overall	2022 IR	Impairments (Causes)	Comments/Actions
				Public Drinking	Agricultural	Industrial					
EL1-21800	Butterfly Creek		NA		NA		NA	NA	3		
EL1-21900	Union Creek	I	S		S		S	I	5	Recreation (<i>E. coli</i>)	Fish Consumption Assessment completed, Aquatic Community Assessment completed
EL1-21910	Sand Creek		NA		NA		NA	NA	3		
EL1-21920	Meridian Creek		S		NA		S	S	2		Aquatic Community Assessment completed
EL1-21921	Tracy Creek		S		NA		S	S	2		Aquatic Community Assessment completed
EL1-21930	Meridian Creek		NA		NA		NA	NA	3		
EL1-22000	Union Creek	I	S		S		NA	I	5	Recreation (<i>E. coli</i>)	
EL1-22010	Taylor Creek		NA		NA		NA	NA	3		
EL1-22100	Union Creek		I		NA		NA	I	5	Aquatic Life - Impaired Aquatic Community (Unknown)	Aquatic Community Assessment completed
EL1-22200	Unnamed Creek		NA		NA		NA	NA	3		
EL1-22300	Unnamed Creek		NA		NA		NA	NA	3		
EL2-10000	Logan Creek	I	I		I		S	I	5	Recreation (<i>E.coli</i>), Aquatic Life (Natural Selenium), Agricultural Water Supply (Selenium)	Se 4C justification approved 3/09†, Fish Consumption Assessment completed

Waterbody ID	Waterbody Name	Recreation	Aquatic Life	Water Supply			Aesthetics	Overall	2022 IR	Impairments (Causes)	Comments/Actions
				Public Drinking	Agricultural	Industrial					
EL2-10100	Unnamed Creek		NA		NA		NA	NA	3		
EL2-10200	Little Logan Creek		S		S		S	S	1		Aquatic Community Assessment completed
EL2-10210	Unnamed Creek		NA		NA		NA	NA	3		
EL2-10300	Little Logan Creek		S		NA		S	S	2		Aquatic Community Assessment completed
EL2-10400	Big Slough Creek		NA		NA		NA	NA	3		
EL2-20000	Logan Creek	I	S		S		S	I	5	Recreation (<i>E. coli</i>)	
EL2-20100	Rattlesnake Creek		NA		NA		NA	NA	3		
EL2-20200	Unnamed Creek		S		NA		S	S	2		Aquatic Community Assessment completed
EL2-20300	Middle Creek		S		S		S	S	1		
EL2-20400	Rattlesnake Creek		I		NA		NA	I	5	Aquatic Life - Impaired Aquatic Community (Unknown)	Aquatic Community Assessment completed
EL2-20500	Unnamed Creek		NA		NA		NA	NA	3		
EL2-20600	Unnamed Creek		NA		NA		NA	NA	3		
EL2-20700	Coon Creek		I		NA		S	I	5	Aquatic Life - Impaired Aquatic Community (Unknown)	Aquatic Community Assessment completed
EL2-20800	South Logan Creek	I	S		S		S	I	5	Recreation (<i>E. coli</i>)	Fish Consumption Assessment completed

Waterbody ID	Waterbody Name	Recreation	Aquatic Life	Water Supply			Aesthetics	Overall	2022 IR	Impairments (Causes)	Comments/Actions
				Public Drinking	Agricultural	Industrial					
EL2-20810	Dog Creek		S		NA		S	S	2		Aquatic Community Assessment completed
EL2-20900	South Logan Creek		S		S		NA	S	2		
EL2-20910	Deer Creek		NA		NA		NA	NA	3		
EL2-20911	Unnamed Creek		NA		NA		NA	NA	3		
EL2-20920	Deer Creek		S		NA		S	S	2		Aquatic Community Assessment completed
EL2-21000	South Logan Creek		NA		NA		NA	NA	3		
EL2-30000	Logan Creek		S		S		NA	S	2		
EL2-30100	North Logan Creek		S		S		NA	S	2		
EL2-40000	Logan Creek		S		S		NA	S	2		
EL2-40100	Baker Creek		I		NA		S	I	5	Aquatic Life - Impaired Aquatic Community (Unknown)	Aquatic Community Assessment completed
EL2-40200	Middle Logan Creek		I		S		S	I	5	Aquatic Life - Impaired Aquatic Community (Unknown)	Aquatic Community Assessment completed
EL2-40300	Perrin Creek		S		NA		S	S	2		Aquatic Community Assessment completed
EL3-10000	North Fork Elkhorn River	I	S		NA		NA	I	5	Recreation (<i>E. coli</i>)	Fish Consumption Assessment completed

Waterbody ID	Waterbody Name	Recreation	Aquatic Life	Water Supply			Aesthetics	Overall	2022 IR	Impairments (Causes)	Comments/Actions
				Public Drinking	Agricultural	Industrial					
EL3-10100	Spring Creek		NA		NA		NA	NA	3		
EL3-20000	North Fork Elkhorn River	I	S		S		S	I	4a	Recreation (<i>E. coli</i>)	Se 4C justification approved 3/09†, E. coli TMDL approved 3/09, Aquatic Community Assessment completed, Fish Consumption Assessment completed
EL3-20100	Hadar Creek		NA		NA		NA	NA	3		
EL3-20200	Willow Creek	I	S		S		S	I	5	Recreation (<i>E. coli</i>)	Aquatic Community Assessment completed, Fish Consumption Assessment completed
EL3-20300	Willow Creek	NA	NA		NA		NA	NA	3		
EL3-20400	Dry Creek	I	S		NA		NA	I	5	Recreation (<i>E. coli</i>)	Aquatic Community Assessment completed
EL3-20500	Dry Creek		S		NA		S	S	2		Aquatic Community Assessment completed
EL3-30000	North Fork Elkhorn River		S		S		S	S	1		Aquatic Community Assessment completed
EL3-30100	West Branch North Fork Elkhorn River		NA		NA		NA	NA	3		
EL3-30110	Breslau Creek		NA		NA		NA	NA	3		
EL3-40000	North Fork Elkhorn River		NA		NA		NA	NA	3		

Waterbody ID	Waterbody Name	Recreation	Aquatic Life	Water Supply			Aesthetics	Overall	2022 IR	Impairments (Causes)	Comments/Actions
				Public Drinking	Agricultural	Industrial					
EL4-10000	Elkhorn River	I	S		S		S	I	4a	Recreation (<i>E. coli</i>)	E. coli TMDL approved 9/09, Aquatic Community Assessment completed, Fish Consumption Assessment completed
EL4-10100	Unnamed Creek		NA		NA		NA	NA	3		
EL4-10200	Unnamed Creek		NA		NA		NA	NA	3		
EL4-10300	Unnamed Creek		NA		NA		NA	NA	3		
EL4-10400	Battle Creek	I	S		S		S	I	5	Recreation (<i>E. coli</i>)	Aquatic Community Assessment completed, Fish Consumption Assessment completed
EL4-10500	Battle Creek		S		NA		S	S	2		Aquatic Community Assessment completed
EL4-10600	Deer Creek		NA		NA		NA	NA	3		
EL4-10700	Buffalo Creek		S		NA		S	S	2		Aquatic Community Assessment completed
EL4-10800	Dry Creek		NA		NA		NA	NA	3		
EL4-10900	Al Hopkins Creek		NA		NA		NA	NA	3		
EL4-11000	Giles Creek		NA		NA		NA	NA	3		
EL4-11100	Ives Creek		NA		NA		NA	NA	3		

Waterbody ID	Waterbody Name	Recreation	Aquatic Life	Water Supply			Aesthetics	Overall	2022 IR	Impairments (Causes)	Comments/Actions
				Public Drinking	Agricultural	Industrial					
EL4-11200	Trueblood Creek		NA		NA		NA	NA	3		
EL4-11300	Cedar Creek	I	S		S		S	I	5	Recreation (<i>E. coli</i>)	
EL4-11310	Blacksnake Creek		NA		NA		NA	NA	3		
EL4-11400	Cedar Creek		NA		NA		NA	NA	3		
EL4-20000	Elkhorn River	I	S		S		S	I	4a	Recreation (<i>E. coli</i>)	E. coli TMDL approved 9/09, Fish Consumption Assessment completed
EL4-20100	Belmer Creek		NA		NA		NA	NA	3		
EL4-20200	Antelope Creek		NA		NA		NA	NA	3		
EL4-20300	Clearwater Creek	I	S		S		S	I	5	Recreation (<i>E. coli</i>)	Aquatic Community Assessment completed
EL4-20400	Clearwater Creek		NA		NA		NA	NA	3		
EL4-20500	Cache Creek		S		S		NA	S	2		
EL4-20600	Cache Creek		S		NA		S	S	2		Aquatic Community Assessment completed
EL4-20700	South Fork Elkhorn River	I	S		S		S	I	5	Recreation (<i>E. coli</i>)	Aquatic Community Assessment completed
EL4-20800	South Fork Elkhorn River		S		NA		S	S	2		Aquatic Community Assessment completed

Waterbody ID	Waterbody Name	Recreation	Aquatic Life	Water Supply			Aesthetics	Overall	2022 IR	Impairments (Causes)	Comments/Actions
				Public Drinking	Agricultural	Industrial					
EL4-30000	Elkhorn River	I	S		S		S	I	4a	Recreation (<i>E. coli</i>)	E. coli TMDL approved 9/09, Fish Consumption Assessment completed, Aquatic Community Assessment completed
EL4-30100	Willow Swamp Creek		NA		NA		NA	NA	3		
EL4-30200	Dry Creek		S		S		S	S	1		Aquatic Community Assessment completed
EL4-30300	Dry Creek		NA		NA		NA	NA	3		
EL4-30400	Holt Creek		S		NA		S	S	2		Aquatic Community Assessment completed
EL4-30500	Holt Creek		S		NA		S	S	2		Aquatic Community Assessment completed
EL4-40000	Elkhorn River	I	S		S		S	I	5	Recreation (<i>E. coli</i>)	Aquatic Community Assessment completed
EL4-40100	South Fork Elkhorn River		NA		NA		NA	NA	3		
EL4-40200	North Fork Elkhorn River		NA		NA		NA	NA	3		

***Cancer risk compounds** -Aroclor-1248 (PCB-1248), Aroclor-1254 (PCB-1254), Aroclor-1260 (PCB-1260), cis-chlordane, Chlordane, trans-chlordane, DDD, DDE, DDT, Dieldrin, Heptachlor, Heptachlor Epoxide, Hexachlorobenzene, cis-nonachlor, trans-nonachlor, Oxychlordane, Pentachloroanisole, Trifluralin

***Hazard index compounds**- Aroclor-1254 (PCB-1254), Lindane (g-BHC), cis-chlordane, Chlordane, trans-chlordane, DDT, Dieldrin, Heptachlor, Heptachlor Epoxide, Hexachlorobenzene, cis-nonachlor, trans-nonachlor, Oxychlordane, Pentachloroanisole, Trifluralin, Mercury, Cadmium, Selenium

¹ XXX# designates in Title 117 an undesignated waterbody. See Title 117 Chapter 2.004.

Waterbody ID	Waterbody Name	Recreation	Aquatic Life	Water Supply			Aesthetics	Overall	2022 IR	Impairments (Causes)	Comments/Actions
				Public Drinking	Agricultural	Industrial					
Lakes											
LO1-L0010	Columbus City Park Pond	NA	I		NA		NA	I	5	Aquatic Life - Fish Consumption Advisory (Mercury)	Fish Consumption Assessment completed
LO1-L0020	Columbus Izaak Walton Lake	NA	NA		NA		NA	NA	3		
LO1-L0030	Pawnee Park Lake (Columbus)	NA	NA		NA		NA	NA	3		
LO1-L0040	Stires Lake	NA	NA		NA		NA	NA	3		
LO1-L0050	Wagner's Lake	NA	NA		NA		NA	NA	3		
LO1-L0060	Loup Power District Headgate Pond No. 1	NA	NA		NA		NA	NA	3		
LO1-L0070	Loup Power District Headgate Pond No. 2	NA	NA		NA		NA	NA	3		
LO1-L0080	Loup Power District Headgate Pond No. 3	NA	NA		NA		NA	NA	3		
LO1-L0090	Loup Power District Headgate Pond No. 4	NA	NA		NA		NA	NA	3		
LO1-L0100	Loup Power District Headgate Pond No. 5	NA	NA		NA		NA	NA	3		
LO1-L0110	Stevenson's Lake	NA	NA		NA		NA	NA	3		
LO1-L0120	Wolbach City Lake	NA	NA		NA		NA	NA	3		

Waterbody ID	Waterbody Name	Recreation	Aquatic Life	Water Supply			Aesthetics	Overall	2022 IR	Impairments (Causes)	Comments/Actions
				Public Drinking	Agricultural	Industrial					
LO1-L0125	Spalding Lake	NA	NA		NA		NA	NA	3		
LO1-L0130	Pibel Lake	NA	I		S		S	I	5	Aquatic Life - Fish Consumption Advisory (Mercury), Chlorophyll α (Total Nitrogen, Total Phosphorus)	Lake renovated 2018, Fish Consumption Assessment completed
LO1-L0140	Lake Ericson	NA	S		S		S	S	2		Fish Consumption Assessment completed
LO2-L0010	North Loup Lake (SRA)	NA	I		NA		S	S	5	Aquatic Life - Fish Consumption Advisory (Mercury)	Fish Consumption Assessment completed
LO2-L0015	Davis Creek Reservoir	S	I		S		S	I	5	Aquatic Life - Fish Consumption Advisory (Mercury)	Fish Consumption Assessment completed
LO2-L0020	Ord City Lake	NA	S		NA		S	S	2		Fish Consumption Assessment completed
LO2-L0030	Burwell Lake	NA	NA		NA		NA	NA	3		
LO2-L0040	Burwell Park Lake	NA	NA		NA		NA	NA	3		
LO2-L0050	Calamus Reservoir	S	I		S		S	I	5	Aquatic Life - Fish Consumption Advisory (Mercury), pH, Chlorophyll α (Total Nitrogen, Total Phosphorus)	Fish Consumption Assessment completed
LO2-L0055	Willow Lake B.C.	NA	S		NA		NA	S	2		Fish Consumption Assessment completed
LO2-L0060	Clear Lake	NA	S		S		S	S	2		

Waterbody ID	Waterbody Name	Recreation	Aquatic Life	Water Supply			Aesthetics	Overall	2022 IR	Impairments (Causes)	Comments/Actions
				Public Drinking	Agricultural	Industrial					
LO2-L0070	Enders Overflow Lake	NA	NA		NA		NA	NA	3		
LO2-L0080	Long Lake (SRA)	NA	S		S		S	S	2		
LO2-L0090	South Twin Lake (WMA)	NA	NA		NA		NA	NA	3		
LO2-L0100	Dew Lake (Valentine NWR)	NA	NA		NA		NA	NA	3		
LO2-L0110	Crooked Lake (Valentine NWR)	NA	NA		NA		NA	NA	3		
LO2-L0120	East Long Lake (Valentine NWR)	NA	NA		NA		NA	NA	3		
LO2-L0180	Cow Lake (Valentine NWR)	NA	NA		NA		NA	NA	3		
LO2-L0250	Coleman Lake (Valentine NWR)	NA	NA		NA		NA	NA	3		
LO2-L0260	Rat and Beaver Lake (WMA)	NA	S		NA		S	S	2		Fish Consumption Assessment completed
LO2-L0270	Mule Lake (Valentine NWR)	NA	NA		NA		NA	NA	3		
LO2-L0280	Devil's Punch Bowl Lake	NA	NA		NA		NA	NA	3		
LO3-L0010	Farwell South Reservoir	NA	S		NA		S	S	2		Fish Consumption Assessment completed

Waterbody ID	Waterbody Name	Recreation	Aquatic Life	Water Supply			Aesthetics	Overall	2022 IR	Impairments (Causes)	Comments/Actions
				Public Drinking	Agricultural	Industrial					
LO3-L0020	Sherman Reservoir	S	I		S		S	I	5	Aquatic Life - Fish Consumption Advisory (Mercury), (Total Phosphorus)	Fish Consumption Assessment completed
LO3-L0030	Bowman Lake (SRA)	NA	NA		NA		NA	NA	3		
LO3-L0040	Victoria Springs Lake (SRA)	NA	NA		NA		NA	NA	3		
LO3-L0050	Bessey Fish Pond (Nebraska National Forest)	NA	S		NA		S	S	2		Fish Consumption Assessment completed
LO3-L0060	Spring Valley Lake	NA	NA		NA		NA	NA	3		
LO3-L0070	Frye Lake	NA	I		S		S	I	5	Aquatic Life - Fish Consumption Advisory (Mercury)	Fish Consumption Assessment completed
LO3-L0090	Alkali Lake	NA	S		S		S	S	2		Naturally alkaline Sandhills lake
LO4-L0010	Ravenna Lake (SRA)	NA	I		NA		NA	I	5	Aquatic Life - Fish Consumption Advisory (Mercury)	Fish Consumption Assessment completed
LO4-L0020	Beaver Creek Lake (SWA)	NA	NA		NA		NA	NA	3		
LO4-L0030	Ansley City Lake	NA	I		S		S	I	5	Aquatic Life - Fish Consumption Advisory (Mercury), Chlorophyll a (Total Nitrogen)	Lake renovated 2003, Fish Consumption Assessment completed
LO4-L0040	Melham Park Lake (Broken Bow)	NA	I		NA		NA	I	5	Aquatic Life - Fish Consumption Advisory (Mercury)	Fish Consumption Assessment completed
LO4-L0045	Pressey Pond (WMA)	NA	I		NA		NA	I	5	Aquatic Life - Fish Consumption Advisory (Mercury)	Previously listed as LO4-LXXX1, permanent Waterbody ID assigned 6/19, Fish Consumption Assessment completed

Waterbody ID	Waterbody Name	Recreation	Aquatic Life	Water Supply			Aesthetics	Overall	2022 IR	Impairments (Causes)	Comments/Actions
				Public Drinking	Agricultural	Industrial					
LO4-L0050	Arnold Lake (SRA)	NA	I		NA		S	S	5	Aquatic Life - Fish Consumption Advisory (Mercury)	Fish Consumption Assessment completed
Streams											
LO1-10000	Loup River	I	S		S		S	I	4a	Recreation (<i>E. coli</i>)	E. coli TMDL approved 1/06, Fish Consumption Assessment completed
LO1-10100	Barnum Creek		NA		NA		NA	NA	3		
LO1-10200	Cherry Creek		NA		NA		NA	NA	3		
LO1-10300	Unnamed Creek		NA		NA		NA	NA	3		
LO1-10400	Looking Glass Creek		S		NA		NA	S	2		Aquatic Community Assessment completed
LO1-10500	Looking Glass Creek		NA		NA		NA	NA	3		
LO1-10600	Beaver Creek	I	S		S		S	I	5	Recreation (<i>E. coli</i>)	Fish tissue assessment completed, Aquatic Community Assessment completed
LO1-10610	Bogus Creek		NA		NA		NA	NA	3		
LO1-10700	Beaver Creek	I	I		S		S	I	5	Recreation (<i>E. coli</i>), Aquatic Life - Impaired Aquatic Community (Unknown)	Aquatic Community Assessment completed, Fish Consumption Assessment completed
LO1-10800	Beaver Creek		S		NA		S	S	2		Aquatic Community Assessment completed
LO1-10900	Beaver Creek		S		NA		S	S	2		Aquatic Community Assessment completed

Waterbody ID	Waterbody Name	Recreation	Aquatic Life	Water Supply			Aesthetics	Overall	2022 IR	Impairments (Causes)	Comments/Actions
				Public Drinking	Agricultural	Industrial					
LO1-10910	Unnamed Tributary		NA		NA		NA	NA	3		
LO1-11000	Beaver Creek		NA		NA		NA	NA	3		
LO1-20000	Loup River	NA	NA		NA		NA	NA	3		
LO1-20100	Unnamed Creek		NA		NA		NA	NA	3		
LO1-20200	Loup River Canal	I	S		S		S	I	5	Recreation (<i>E. coli</i>)	Fish tissue assessment completed
LO1-30000	Loup River	I	S		S		S	I	4a	Recreation (<i>E. coli</i>)	E. coli TMDL approved 1/06
LO1-30100	Council Creek		NA		NA		NA	NA	3		
LO1-30200	Plum Creek		S		NA		S	S	2		Aquatic Community Assessment completed
LO1-30300	Cedar River	I	S		S		S	I	4a	Recreation (<i>E. coli</i>)	E. coli TMDL approved 1/06, Fish Consumption Assessment completed
LO1-30310	Timber Creek		S		S		S	S	1		
LO1-30311	South Branch Timber Creek		I		NA		S	I	5	Aquatic Life - Impaired Aquatic Community (Unknown)	Aquatic Community Assessment completed
LO1-30312	North Branch Timber Creek		NA		NA		NA	NA	3		
LO1-30320	Clear Creek		NA		NA		NA	NA	3		
LO1-30400	Cedar River	I	S		S		S	I	5	Recreation (<i>E. coli</i>)	Aquatic Community Assessment completed

Waterbody ID	Waterbody Name	Recreation	Aquatic Life	Water Supply			Aesthetics	Overall	2022 IR	Impairments (Causes)	Comments/Actions
				Public Drinking	Agricultural	Industrial					
LO1-30500	Cedar River		S		NA		S	S	2		Aquatic Community Assessment completed
LO1-30510	Dry Cedar Creek		NA		NA		NA	NA	3		
LO1-30600	Cedar River		NA		NA		NA	NA	3		
LO1-30610	Little Cedar Creek		NA		NA		NA	NA	3		
LO1-30620	Big Cedar Creek		NA		NA		NA	NA	3		
LO1-30700	Spring Creek		S		S		S	S	1		
LO1-30710	West Branch Spring Creek		NA		NA		NA	NA	3		
LO1-30800	Spring Creek		NA		NA		NA	NA	3		
LO2-10000	North Loup River	I	S		S		S	I	5	Recreation (<i>E. coli</i>)	E. coli TMDL approved 1/06, Aquatic Community Assessment completed, Fish Consumption Assessment completed
LO2-10100	Auger Creek		NA		NA		NA	NA	3		
LO2-10200	Munson Creek		I		S		S	I	5	Aquatic Life - Impaired Aquatic Community (Unknown)	Aquatic Community Assessment completed
LO2-10300	Davis Creek		S		S		S	S	1		Aquatic Community Assessment completed
LO2-10400	Mira Creek		S		S		S	S	1		Aquatic Community Assessment completed

Waterbody ID	Waterbody Name	Recreation	Aquatic Life	Water Supply			Aesthetics	Overall	2022 IR	Impairments (Causes)	Comments/Actions
				Public Drinking	Agricultural	Industrial					
LO2-10410	South Branch Mira Creek		S		S		S	S	1		
LO2-10420	North Branch Mira Creek		S		NA		S	S	2		Aquatic Community Assessment completed
LO2-10500	Messenger Creek		NA		NA		NA	NA	3		
LO2-10600	Spring Creek		S		NA		S	S	2		Aquatic Community Assessment completed
LO2-10700	Elm Creek		NA		NA		NA	NA	3		
LO2-10800	Unnamed Creek		NA		NA		NA	NA	3		
LO2-10900	Dane Creek		I		S		S	I	5	Aquatic Life - Impaired Aquatic Community (Unknown), (May-June Atrazine)	Aquatic community assessment completed
LO2-11000	Haskell Creek		NA		NA		NA	NA	3		
LO2-11100	Turtle Creek		S		NA		S	S	2		Aquatic Community Assessment completed
LO2-11200	Bean Creek		NA		NA		NA	NA	3		
LO2-11300	Calamus River	I	S		S		S	I	5	Recreation (<i>E. coli</i>)	
LO2-11310	Gracie Creek		NA		NA		NA	NA	3		
LO2-11320	Bloody Creek		NA		NA		NA	NA	3		
LO2-11330	Skull Creek		NA		NA		NA	NA	3		

Waterbody ID	Waterbody Name	Recreation	Aquatic Life	Water Supply			Aesthetics	Overall	2022 IR	Impairments (Causes)	Comments/Actions
				Public Drinking	Agricultural	Industrial					
LO2-11400	Calamus River	I	S		S		S	I	4a	Recreation (<i>E. coli</i>)	E. coli TMDL approved 1/06
LO2-11500	Calamus River	I	S		S		S	I	5	Recreation (<i>E. coli</i>)	
LO2-11600	Calamus River		S		S		S	S	1		Aquatic Community Assessment completed
LO2-20000	North Loup River	I	I		S		S	I	5	Recreation (<i>E. coli</i>), Aquatic Life - Temperature (Unknown)	Fish Consumption Assessment completed, Aquatic community assessment completed
LO2-20100	Goose Creek	S	I		S		S	I	5	Aquatic Life - Temperature (Unknown)	Aquatic Community Assessment completed
LO2-20200	Goose Creek		I		NA		S	I	5	Aquatic Life - Impaired Aquatic Community (Unknown)	Aquatic community assessment completed
LO2-30000	North Loup River	I	I		S		S	I	5	Recreation (<i>E. coli</i>), Aquatic Life - Temperature (Unknown)	E. coli TMDL approved 1/06
LO2-30100	Pass Creek		NA		NA		NA	NA	3		
LO2-40000	North Loup River	S	I		S		S	I	5	Aquatic Life - Temperature (Unknown)	E. coli TMDL approved 1/06, Aquatic Community Assessment completed, results were inconclusive - site will be reassessed†
LO2-40100	Brush Creek		NA		NA		NA	NA	3		
LO2-40200	Big Creek		S		NA		NA	S	2		Aquatic Community Assessment completed
LO2-50000	North Loup River		NA		NA		NA	NA	3		
LO2-60000	North Loup River		S		NA		S	S	2		Aquatic Community Assessment completed

Waterbody ID	Waterbody Name	Recreation	Aquatic Life	Water Supply			Aesthetics	Overall	2022 IR	Impairments (Causes)	Comments/Actions
				Public Drinking	Agricultural	Industrial					
LO2-70000	North Loup River		S		NA		S	S	2		Aquatic Community Assessment completed
LO2-70100	Mud Creek		NA		NA		NA	NA	3		
LO3-10000	Middle Loup River	I	S		S		S	I	4a	Recreation (<i>E. coli</i>)	E. coli TMDL approved 1/06, Fish Consumption Assessment completed
LO3-10100	Lake Creek		NA		NA		NA	NA	3		
LO3-10200	Turkey Creek		I		S		S	S	5	Aquatic Life (May-June Atrazine)	Aquatic Community Assessment completed
LO3-10300	Oak Creek		S		S		S	S	1		
LO3-10400	Oak Creek	I	S		S		S	S	2	Recreation (<i>E. coli</i>)	Aquatic Community Assessment completed
LO3-20000	Middle Loup River	S	S		S		S	S	1		
LO3-30000	Middle Loup River	S	S		S		S	S	1		Fish Consumption Assessment completed, Aquatic community assessment completed
LO3-40000	Middle Loup River	S	S		S		S	S	1		Fish Consumption Assessment completed, Aquatic Community Assessment completed
LO3-40100	Unnamed Creek		NA		NA		NA	NA	3		
LO3-40200	Wagner Creek		NA		NA		NA	NA	3		

Waterbody ID	Waterbody Name	Recreation	Aquatic Life	Water Supply			Aesthetics	Overall	2022 IR	Impairments (Causes)	Comments/Actions
				Public Drinking	Agricultural	Industrial					
LO3-40300	Lillian Creek		NA		NA		NA	NA	3		
LO3-40400	Victoria Creek		NA		NA		S	S	2		Aquatic Community Assessment completed, results were inconclusive - site will be reassessed†
LO3-50000	Middle Loup River	S	S		S		S	S	1		Aquatic Community Assessment completed
LO3-50100	Dismal River	S	I		S		S	I	5	Aquatic Life - Temperature (Unknown)	Fish Consumption Assessment completed
LO3-50200	Dismal River	I	S		S		S	I	5	Recreation (<i>E. coli</i>)	Aquatic Community Assessment completed
LO3-50300	Dismal River	I	S		S		S	I	4a	Recreation (<i>E. coli</i>)	<i>E. coli</i> TMDL approved 1/06
LO3-50310	South Fork Dismal River	I	S		S		NA	I	5	Recreation (<i>E. coli</i>)	
LO3-50320	South Fork Dismal River		NA		NA		NA	NA	3		
LO3-50330	North Fork Dismal River	I	S		S		S	I	5	Recreation (<i>E. coli</i>)	Aquatic Community Assessment completed
LO3-50340	North Fork Dismal River		NA		NA		NA	NA	3		
LO3-60000	Middle Loup River	I	I		S		S	I	5	Recreation (<i>E. coli</i>), Aquatic Life - Temperature (Unknown)	Aquatic Community Assessment completed
LO3-70000	Middle Loup River	I	S		S		S	I	5	Recreation (<i>E. coli</i>)	Aquatic community assessment completed
LO3-70100	South Branch Middle Loup River		S		S		NA	S	2		
LO3-70200	North Branch Middle Loup River		S		NA		S	S	2		Aquatic Community Assessment completed

Waterbody ID	Waterbody Name	Recreation	Aquatic Life	Water Supply			Aesthetics	Overall	2022 IR	Impairments (Causes)	Comments/Actions
				Public Drinking	Agricultural	Industrial					
LO3-70210	Middle Branch Middle Loup River		S		S		S	S	1		Aquatic Community Assessment completed
LO3-70300	North Branch Middle Loup River		S		S		NA	S	2		
LO4-10000	South Loup River	I	S		S		S	I	5	Recreation (<i>E. coli</i>)	E. coli TMDL approved 1/06, Aquatic Community Assessment completed, Fish Consumption Assessment completed, E. coli Impairment being addressed in the South Loup WMP beginning 9/17
LO4-10100	Mud Creek	I	I		S		S	I	5	Recreation (<i>E. coli</i>), Aquatic Life - Impaired Aquatic Community (Unknown), (May-June Atrazine)	Aquatic Community Assessment completed, E. coli & Atrazine TMDLs approved 5/12
LO4-10110	Spring Branch		NA		NA		NA	NA	3		
LO4-10120	Clear Creek		NA		NA		NA	NA	3		
LO4-10200	Mud Creek	I	I		S		S	I	5	Recreation (<i>E. coli</i>), Aquatic Life - Impaired Aquatic Community (Unknown)	E. coli TMDL approved 5/12, Aquatic Community Assessment completed
LO4-10210	Dutchman Valley		NA		NA		NA	NA	3		
LO4-20000	South Loup River	I	S		S		S	I	4a	Recreation (<i>E. coli</i>)	E. coli TMDL approved 1/06, Aquatic community, Fish Consumption Assessment completed, E. coli Impairment being addressed in the South Loup WMP beginning 9/17
LO4-20100	Spring Creek		NA		NA		NA	NA	3		

Waterbody ID	Waterbody Name	Recreation	Aquatic Life	Water Supply			Aesthetics	Overall	2022 IR	Impairments (Causes)	Comments/Actions
				Public Drinking	Agricultural	Industrial					
LO4-30000	South Loup River	I	S		S		S	I	5-alt	Recreation (<i>E. coli</i>)	Aquatic Community Assessment completed, <i>E. coli</i> Impairment being addressed in the South Loup WMP beginning 9/17
LO4-30100	Sand Creek		NA		NA		NA	NA	3		
LO4-30200	Unnamed Creek		NA		NA		NA	NA	3		
LO4-40000	South Loup River	I	S		S		S	I	5-alt	Recreation (<i>E. coli</i>)	Aquatic Community Assessment completed, <i>E. coli</i> Impairment being addressed in the South Loup WMP beginning 9/17
LO4-40100	North Fork South Loup River		NA		NA		NA	NA	3		
LO4-50000	South Loup River		S		S		NA	S	2		

***Cancer risk compounds** -Aroclor-1248 (PCB-1248), Aroclor-1254 (PCB-1254), Aroclor-1260 (PCB-1260), cis-chlordane, Chlordane, trans-chlordane, DDD, DDE, DDT, Dieldrin, Heptachlor, Heptachlor Epoxide, Hexachlorobenzene, cis-nonachlor, trans-nonachlor, Oxychlordane, Pentachloroanisole, Trifluralin

***Hazard index compounds**- Aroclor-1254 (PCB-1254), Lindane (g-BHC), cis-chlordane, Chlordane, trans-chlordane, DDT, Dieldrin, Heptachlor, Heptachlor Epoxide, Hexachlorobenzene, cis-nonachlor, trans-nonachlor, Oxychlordane, Pentachloroanisole, Trifluralin, Mercury, Cadmium, Selenium

† See Appendix B: Ecological Justification for Excluding Specific Bio-Indicator Results When Determining Attainment Status of the Aquatic Life Beneficial Use for Nebraska’s 2014 Water Quality Integrated Report

¹ XXX# designates in Title 117 an undesignated waterbody. See Title 117 Chapter 2.004.

Literature Cited:

McCarragher, D. B. 1964. Limnology of carbonate – bicarbonate lakes in Nebraska. Nebraska Game and Parks Commission: White Papers and Manuscripts.

<http://digitalcommons.unl.edu/nebgamewhitepap/8/>

McCarragher, D. B. 1977. Nebraska’s Sandhills Lakes. Nebraska Game and Parks Commission. Lincoln, NE.

Waterbody ID	Waterbody Name	Recreation	Aquatic Life	Water Supply			Aesthetics	Overall	2022 IR	Impairments (Causes)	Comments/Actions
				Public Drinking	Agricultural	Industrial					
Lakes											
LP1-L0010	Louisville Lake No. 1 (SRA)	S	S		NA		NA	S	2		Fish Consumption Assessment completed
LP1-L0020	Louisville Lake No. 1A (SRA)	NA	S		NA		NA	S	2		
LP1-L0030	Louisville Lake No. 2 (SRA)	S	S		NA		S	S	2		Fish Consumption Assessment completed
LP1-L0040	Louisville Lake No. 3 (SRA)	S	NA		NA		NA	S	2		
LP1-L0050	Louisville Lake No. 2A (SRA)	S	NA		NA		NA	S	2		
LP1-L0060	Jenny Newman Lake (Platte River State Park)	NA	I		NA		NA	I	5	Aquatic Life - Chlorophyll α (Total Phosphorus)	
LP1-L0070	Schramm Park Ponds (10 Ponds) (SRA)	NA	NA		NA		NA	NA	3		
LP1-L0080	Qwest Lake (Mahoney State Park)	S	NA		NA		NA	S	2		Name changed from U.S. West Lake to Qwest Lake in 2012
LP1-L0090	Baright Lake (Mahoney State Park)	S	NA		NA		NA	S	2		Name changed from Owen Marina Lake to Baright Lake in 2012
LP1-L0100	Two Rivers Lake No. 5 (SRA)	S	S		NA		NA	S	2		Fish Consumption Assessment completed
LP1-L0110	Two Rivers Carp Lake (SRA)	NA	NA		NA		NA	NA	3		
LP1-L0120	Two Rivers Lake No. 6 (SRA)	S	NA		NA		NA	S	2		

Waterbody ID	Waterbody Name	Recreation	Aquatic Life	Water Supply			Aesthetics	Overall	2022 IR	Impairments (Causes)	Comments/Actions
				Public Drinking	Agricultural	Industrial					
LP1-L0130	Two Rivers Lake No. 1 and 2 (SRA)	S	I		NA		NA	I	5	Aquatic Life - Fish Consumption Advisory (Mercury)	Fish Consumption Assessment completed
LP1-L0140	Two Rivers Lake No. 3 (SRA)	S	NA		NA		NA	S	2		
LP1-L0150	Two Rivers Lake No. 4 (SRA)	S	NA		NA		S	S	2		
LP1-L0160	Fremont Lake No. 14 (SRA)	NA	NA		NA		NA	NA	3		
LP1-L0170	Fremont Lake No. 13 (SRA)	NA	NA		NA		NA	NA	3		
LP1-L0180	Fremont Lake No. 12 (SRA)	S	I		S		S	I	5	Aquatic Life - Chlorophyll α (Total Nitrogen, Total Phosphorus)	Fish Consumption Assessment completed
LP1-L0190	Fremont Lake No. 19 (SRA)	NA	NA		NA		NA	NA	3		
LP1-L0200	Fremont Lake No. 15 (Victory) (SRA)	S	I		S		S	I	5	Aquatic Life - Chlorophyll α (Total Nitrogen, Total Phosphorus)	Fish Consumption Assessment completed
LP1-L0210	Fremont Lake No. 11 (SRA)	NA	I		NA		NA	I	5	Aquatic Life - Fish Consumption Advisory (Mercury)	Fish Consumption Assessment completed
LP1-L0220	Fremont Lake No. 18E (SRA)	S	I		S		S	I	5	Aquatic Life - Chlorophyll α (Total Nitrogen, Total Phosphorus)	
LP1-L0230	Fremont Lake No. 17 (SRA)	S	I		S		S	I	5	Aquatic Life - Chlorophyll α , pH (Total Nitrogen, Total Phosphorus)	Phosphorus TMDL to address Total Phosphorus, Chlorophyll α & pH approved 1/13
LP1-L0240	Fremont Lake No. 10 (SRA)	S	I		S		S	I	5	Aquatic Life - Chlorophyll α (Total Nitrogen, Total Phosphorus)	Fish Consumption Assessment completed

Waterbody ID	Waterbody Name	Recreation	Aquatic Life	Water Supply			Aesthetics	Overall	2022 IR	Impairments (Causes)	Comments/Actions
				Public Drinking	Agricultural	Industrial					
LP1-L0250	Fremont Lake No. 20 (SRA)	S	I		S		S	I	5	Aquatic Life - Fish Consumption Advisory (Mercury), Chlorophyll α (Total Nitrogen, Total Phosphorus)	Phosphorous TMDL to address Algal Toxins approved 9/07, Fish Consumption Assessment completed
LP1-L0270	Fremont Lake No. 16 (SRA)	S	I		S		S	I	5	Aquatic Life - Chlorophyll α , pH (Total Nitrogen, Total Phosphorus)	Phosphorus TMDL to address Chlorophyll α & pH approved 1/13
LP1-L0280	Fremont Lake No. 9 (SRA)	S	I		S		S	I	5	Aquatic Life - Chlorophyll α (Total Nitrogen, Total Phosphorus)	
LP1-L0290	Fremont Lake No. 1 (SRA)	S	I		S		S	I	5	Aquatic Life - Fish Consumption Advisory (Mercury), Chlorophyll α , pH (Total Nitrogen, Total Phosphorus)	Phosphorous TMDL to address Total Phosphorous, Chlorophyll α , Dissolved Oxygen and pH approved 1/13, Fish Consumption Assessment completed
LP1-L0300	Fremont Lake No. 2 (SRA)	S	I		S		S	I	5	Aquatic Life - Chlorophyll α , pH (Total Nitrogen, Total Phosphorus)	Phosphorous TMDL to address Total Phosphorous & Chlorophyll α approved 1/13, Fish Consumption Assessment completed
LP1-L0310	Fremont Lake No. 3 (SRA)	S	I		S		S	I	5	Aquatic Life - Chlorophyll α , Dissolved Oxygen (Total Nitrogen, Total Phosphorus)	Phosphorus TMDL to address Total Phosphorus, Chlorophyll α , & Dissolved Oxygen approved 1/13
LP1-L0315	Fremont Lake No. 3A (SRA)	NA	NA		NA		NA	NA	3		
LP1-L0320	Fremont Lake No. 5 (SRA)	S	I		S		S	I	5	Aquatic Life - Chlorophyll α , pH (Total Nitrogen, Total Phosphorus)	Phosphorus TMDL to address Total Phosphorus, Chlorophyll α , pH, & Dissolved Oxygen approved 1/13
LP1-L0330	Fremont Lake No. 4 (SRA)	S	I		S		S	I	5	Aquatic Life - Chlorophyll α , pH (Total Nitrogen, Total Phosphorus)	Phosphorus TMDL to address Total Phosphorus, Chlorophyll α & pH approved 1/13
LP1-L0340	Fremont Lake No. 6 (SRA)	NA	NA		NA		NA	NA	3		

Waterbody ID	Waterbody Name	Recreation	Aquatic Life	Water Supply			Aesthetics	Overall	2022 IR	Impairments (Causes)	Comments/Actions
				Public Drinking	Agricultural	Industrial					
LP1-L0350	Fremont Lake No. 7 and 8 (SRA)	S	I		S		S	I	5	Aquatic Life - Chlorophyll α , pH (Total Nitrogen, Total Phosphorus)	Phosphorus TMDL to address Total Phosphorus, Chlorophyll α & pH approved 1/13
LP1-L0355	Homestead Lake	S	I		NA		NA	I	5	Aquatic Life - Fish Consumption Advisory (Mercury), Chlorophyll α (Total Nitrogen, Total Phosphorus)	Fish Consumption Assessment completed
LP1-L0360	Schuyler East Park Pond	NA	NA		NA		NA	NA	3		
LP1-L0370	Schuyler City Lake (South Park Lake)	NA	NA		NA		I	I	4r	Aesthetics - Algae Blooms (Unknown)	TN and TP not assessed, Lake renovated in 2006 and will be targeted for reassessment
LP1-L0380	Camp Luther Pond	NA	NA		NA		NA	NA	3		
LP1-L0390	McAllister Lake	NA	NA		NA		NA	NA	3		
LP1-L0400	Christopher Cove Lake	NA	NA		NA		NA	NA	3		
LP1-L0410	Country Club Shores Lake	NA	NA		NA		NA	NA	3		
LP1-L0420	Columbus Country Club Lake	NA	NA		NA		NA	NA	3		
LP1-L0430	Oconee Siphon Pond	NA	NA		NA		NA	NA	3		
LP1-L0440	Lake North	S	I		S	S	S	I	5	Aquatic Life - Chlorophyll α , pH (Total Phosphorus)	Fish Consumption Assessment completed

Waterbody ID	Waterbody Name	Recreation	Aquatic Life	Water Supply			Aesthetics	Overall	2022 IR	Impairments (Causes)	Comments/Actions
				Public Drinking	Agricultural	Industrial					
LP1-L0450	Lake Babcock	I	I		NA	S	S	I	5	Recreation (<i>E. coli</i>), Aquatic Life - Fish Consumption Advisory (Mercury)	Fish Consumption Assessment completed
LP2-L0010	Memphis Lake (SRA)	S	I		S		NA	I	5	Aquatic Life - Fish Consumption Advisory (Mercury)	Fish Consumption Assessment completed
LP2-L0015	Lake Wanahoo	NA	I		NA		S	I	5	Aquatic Life - Fish Consumption Advisory (Mercury), Chlorophyll α (Total Nitrogen, Total Phosphorus)	New lake built in 2012, Fish Consumption Assessment completed
LP2-L0020	Hedgefield Lake (WMA)	NA	I		NA		NA	I	5	Aquatic Life - Fish Consumption Advisory (Mercury), pH	Fish Consumption Assessment completed
LP2-L0030	Wagon Train Lake	S	I		S		S	I	5	Aquatic Life - Chlorophyll α (Total Nitrogen, Total Phosphorus)	Phosphorous TMDL to address Total Phosphorous & Dissolved Oxygen and Sediment TMDLs approved 10/02, Lake Renovated 2001, Fish Consumption Assessment completed
LP2-L0040	Holmes Lake	I	I		S		S	I	5	Recreation (<i>E. coli</i>), Aquatic Life - Fish Consumption Advisory (Mercury), Chlorophyll α , pH (Total Nitrogen, Total Phosphorus)	Phosphorous TMDL to address Total Phosphorous & Dissolved Oxygen and Sediment TMDLs approved 7/03, Lake renovated 2005, Fish Consumption Assessment completed
LP2-L0050	Stagecoach Lake	S	I		S		I	I	5	Aquatic Life - Chlorophyll α (Total Nitrogen, Total Phosphorus), Aesthetics (Sediment)	Fish Consumption Assessment completed
LP2-L0060	Oak Lake	NA	I		NA		S	I	5	Aquatic Life - Dissolved Oxygen (Unknown), (Natural Chlorides)	TN and TP not assessed, Salinity is natural. Fish Consumption Assessment completed
LP2-L0065	Regional Center Pond	NA	NA		NA		NA	NA	3		

Waterbody ID	Waterbody Name	Recreation	Aquatic Life	Water Supply			Aesthetics	Overall	2022 IR	Impairments (Causes)	Comments/Actions
				Public Drinking	Agricultural	Industrial					
LP2-L0070	Cottontail Lake (17A)	S	I		NA		NA	I	5	Aquatic Life - Fish Consumption Advisory (Mercury)	Fish Consumption Assessment completed
LP2-L0080	Killdeer Lake (WMA)	NA	S		NA		NA	S	2		Fish Consumption Assessment completed
LP2-L0090	Yankee Hill Lake	S	I		S		S	I	5	Aquatic Life - Fish Tissue Advisory (Mercury), Chlorophyll α , pH (Total Nitrogen, Total Phosphorus)	Phosphorus TMDL to address Total Phosphorus and Sediment TMDLs approved 9/02, Lake Renovated in 2006 and reassessed in 2015-16, Fish Consumption Assessment completed
LP2-L0100	Bowling Lake	NA	I		NA		S	I	5	Aquatic Life - Fish Tissue Advisory (Mercury), Chlorophyll α , pH (Total Nitrogen, Total Phosphorus)	Lake Renovated in 2006 and will be targeted for reassessment in 2021, Fish Consumption Assessment completed
LP2-L0110	Bluestem Lake	I	I		S		I	I	5	Recreation (<i>E. coli</i>), Aquatic Life - Chlorophyll α (Total Nitrogen, Total Phosphorus), Aesthetics (Sediment)	Fish Consumption Assessment completed
LP2-L0120	Wildwood Lake	S	I		S		S	I	5	Aquatic Life - Fish Consumption Advisory (Mercury), Chlorophyll α , Dissolved Oxygen (Total Nitrogen, Total Phosphorus)	Lake Renovated 2004, Fish Consumption Assessment completed
LP2-L0130	Conestoga Lake	S	I		S		I	I	5	Aquatic Life - Chlorophyll α (Total Nitrogen, Total Phosphorus), Aesthetics (Sediment)	Fish Consumption Assessment completed, Lake drained for a renovation as of 2018
LP2-L0140	Olive Creek Lake	S	I		S		S	I	5	Aquatic Life - Fish Consumption Advisory (Mercury), Chlorophyll α , pH, Dissolved Oxygen (Total Nitrogen, Total Phosphorus)	Fish Consumption Assessment completed

Waterbody ID	Waterbody Name	Recreation	Aquatic Life	Water Supply			Aesthetics	Overall	2022 IR	Impairments (Causes)	Comments/Actions
				Public Drinking	Agricultural	Industrial					
LP2-L0150	Branched Oak Lake	I	I		S		S	I	5	Recreation (<i>E. coli</i>), Aquatic Life - Chlorophyll α (Total Nitrogen, Total Phosphorus)	Fish Consumption Assessment completed
LP2-L0160	Pawnee Lake	S	I		S		I	I	5	Aquatic Life - Fish Tissue Advisory (Mercury), Chlorophyll α (Total Nitrogen, Total Phosphorus), Aesthetics (Sediment)	Sediment TMDL approved 3/01, Fish Consumption Assessment completed
LP2-L0170	Merganser Lake (25A)	NA	I		NA		NA	I	5	Aquatic Life - Fish Consumption Advisory (Mercury)	Fish Consumption Assessment completed
LP2-L0180	Teal Lake (27C)	NA	NA		NA		NA	NA	3		
LP2-L0190	Red Cedar Lake	S	I		NA		NA	I	5	Aquatic Life - Fish Consumption Advisory (Mercury)	Fish Consumption Assessment completed
LP2-L0200	Wild Plum Lake (26A)	S	I		NA		NA	I	5	Aquatic Life - Fish Consumption Advisory (Mercury)	Fish Consumption Assessment completed
LP2-L0210	Tanglewood Lake (27C)	NA	NA		NA		NA	NA	3		
LP2-L0220	Meadowlark Lake	S	I		S		S	I	5	Aquatic Life - Fish Consumption Advisory (Mercury), Chlorophyll α (Total Nitrogen, Total Phosphorus)	Lake renovated 2006, Fish Consumption Assessment completed
LP2-L0230	Twin Lakes WMA Pond	NA	NA		NA		NA	NA	3		
LP2-L0240	East Twin Lake	S	I		S		S	I	5	Aquatic Life - Chlorophyll α (Total Nitrogen, Total Phosphorus)	Fish Consumption Assessment completed
LP2-L0250	Timber Point Lake (6C)	S	I		NA		NA	I	5	Aquatic Life - Fish Consumption Advisory (Mercury)	Fish Consumption Assessment completed
LP2-L0260	West Twin Lake	NA	I		S		S	I	5	Aquatic Life - Chlorophyll α (Total Nitrogen, Total Phosphorus),	

Waterbody ID	Waterbody Name	Recreation	Aquatic Life	Water Supply			Aesthetics	Overall	2022 IR	Impairments (Causes)	Comments/Actions
				Public Drinking	Agricultural	Industrial					
										(Ammonia)	
LP2-L0270	Czechland Lake	NA	I		S		S	I	5	Aquatic Life - Fish Consumption Advisory (Mercury), Chlorophyll α , pH (Total Nitrogen, Total Phosphorus)	Fish Consumption Assessment completed
LP2-L0280	Redtail Lake	NA	I		NA		NA	I	5	Aquatic Life - Fish Consumption Advisory (Mercury), Chlorophyll α (Total Phosphorus)	Fish Consumption Assessment completed
Streams											
LP1-10000	Platte River	I	I	I	S		S	I	5	Recreation (<i>E. coli</i>), Aquatic Life - Fish Consumption Advisory (Hazard Index Compounds*) Public Drinking Water Supply (Arsenic)	<i>E. coli</i> TMDL approved 9/07, Fish Consumption Assessment completed
LP1-10100	Fourmile Creek		S		S		S	S	1		Aquatic Community Assessment completed
LP1-10110	Eightmile Creek		S		NA		S	S	2		Aquatic Community Assessment completed
LP1-10111	Bachelor Branch		NA		NA		NA	NA	3		
LP1-10200	Fourmile Creek		S		NA		S	S	2		Aquatic Community Assessment completed
LP1-10210	Unnamed Creek		NA		NA		NA	NA	3		
LP1-10300	Fourmile Creek		NA		NA		NA	NA	3		
LP1-10400	Zwiebel Creek		NA		NA		NA	NA	3		

Waterbody ID	Waterbody Name	Recreation	Aquatic Life	Water Supply			Aesthetics	Overall	2022 IR	Impairments (Causes)	Comments/Actions
				Public Drinking	Agricultural	Industrial					
LP1-10410	Unnamed Creek		NA		NA		NA	NA	3		
LP1-10500	Zwiebel Creek		NA		NA		NA	NA	3		
LP1-10600	Turkey Creek		NA		NA		NA	NA	3		
LP1-10700	Cedar Creek		NA		NA		NA	NA	3		
LP1-10710	Unnamed Creek		NA		NA		NA	NA	3		
LP1-10800	Cedar Creek		NA		NA		NA	NA	3		
LP1-10900	Springfield Creek		S		S		NA	S	2		
LP1-11000	Buffalo Creek		S		S		NA	S	2		
LP1-11100	Mill Creek		NA		NA		NA	NA	3		
LP1-11200	Decker Creek	I	S		S		S	I	5	Recreation (<i>E. coli</i>)	Aquatic Community Assessment completed
LP1-11300	Fountain Creek		S		S		NA	S	2		
LP1-11400	Unnamed Creek		NA		NA		NA	NA	3		
LP1-11500	Pawnee Creek		S		NA		S	S	2		Aquatic Community Assessment completed

Waterbody ID	Waterbody Name	Recreation	Aquatic Life	Water Supply			Aesthetics	Overall	2022 IR	Impairments (Causes)	Comments/Actions
				Public Drinking	Agricultural	Industrial					
LP1-11510	West Branch Pawnee Creek		NA		NA		NA	NA	3		
LP1-11600	Pawnee Creek		S		NA		S	S	2		Aquatic Community Assessment completed
LP1-11700	Western Sarpy Ditch		S		NA		S	S	2		Aquatic Community Assessment completed
LP1-20000	Platte River	I	S	I	S		S	S	5	Recreation (<i>E. coli</i>), Public Drinking Water Supply (Arsenic)	E. coli TMDL approved 9/07, Fish Consumption Assessment completed
LP1-20100	Clear Creek		NA		NA		NA	NA	3		
LP1-20110	Upper Clear Creek		NA		NA		NA	NA	3		
LP1-20200	Clear Creek		NA		NA		NA	NA	3		
LP1-20300	Otoe Creek		NA		NA		NA	NA	3		
LP1-20400	Skull Creek		S		S		S	S	1		Aquatic Community Assessment completed
LP1-20410	Unnamed Creek		NA		NA		NA	NA	3		
LP1-20500	Skull Creek		NA		NA		NA	NA	3		
LP1-20600	Shell Creek	I	S		S		S	I	5	Recreation (<i>E. coli</i>)	
LP1-20610	Taylor Creek		NA		NA		NA	NA	3		

Waterbody ID	Waterbody Name	Recreation	Aquatic Life	Water Supply			Aesthetics	Overall	2022 IR	Impairments (Causes)	Comments/Actions
				Public Drinking	Agricultural	Industrial					
LP1-20620	Loseke Creek		S		S		NA	S	2		Fish Consumption Assessment completed
LP1-20621	Schaad Creek		NA		NA		NA	NA	3		
LP1-20621.1	Unnamed Creek		NA		NA		NA	NA	3		
LP1-20630	Loseke Creek		S		NA		S	S	2		Aquatic Community Assessment completed
LP1-20631	Unnamed Creek		NA		NA		NA	NA	3		
LP1-20640	Loseke Creek		S		NA		S	S	2		Aquatic Community Assessment completed
LP1-20700	Shell Creek		S		S		S	S	1		Atrazine TMDL approved 9/07
LP1-20710	Unnamed Creek		NA		NA		NA	NA	3		
LP1-20720	Elm Creek		S		NA		S	S	2		Aquatic Community Assessment completed
LP1-20800	Shell Creek		I		S		S	I	5	Aquatic Life - Impaired Aquatic Community (Unknown)	Aquatic Community Assessment completed
LP1-20810	North Shell Creek		NA		NA		NA	NA	3		
LP1-20900	Shell Creek		NA		NA		NA	NA	3		
LP1-21000	Lost Creek		S		S		NA	S	2		

Waterbody ID	Waterbody Name	Recreation	Aquatic Life	Water Supply			Aesthetics	Overall	2022 IR	Impairments (Causes)	Comments/Actions
				Public Drinking	Agricultural	Industrial					
LP1-21010	Shonka Ditch		S		NA		NA	S	2		
LP1-21100	Lost Creek		S		NA		S	S	2		Aquatic Community Assessment completed
LP1-21200	Lost Creek		NA		NA		NA	NA	3		
LP1-21300	Bone Creek		S		S		NA	S	2		
LP1-21310	Unnamed Creek		NA		NA		NA	NA	3		
LP1-21400	Bone Creek		S		NA		S	S	2		Aquatic Community Assessment completed
LP1-21500	Unnamed Creek		NA		NA		NA	NA	3		
LP1-21600	Deer Creek		NA		NA		NA	NA	3		
LP1-21700	Unnamed Creek		NA		NA		NA	NA	3		
LP1-21800	Loup River Canal	S	S		NA	S	S	S	2		Fish Consumption Assessment completed
LP2-10000	Salt Creek	I	S				S	I	4a	Recreation (<i>E. coli</i>)	<i>E. coli</i> TMDL approved 9/07, Fish Consumption Assessment completed
LP2-10100	Wahoo Creek	I	S		S		S	I	4a	Recreation (<i>E. coli</i>)	<i>E. coli</i> TMDL approved 9/07, Aquatic Community & Fish Consumption Assessment completed
LP2-10110	Clear Creek	I	S		S		S	I	5	Recreation (<i>E. coli</i>)	Aquatic Community Assessment completed

Waterbody ID	Waterbody Name	Recreation	Aquatic Life	Water Supply			Aesthetics	Overall	2022 IR	Impairments (Causes)	Comments/Actions
				Public Drinking	Agricultural	Industrial					
LP2-10111	Silver Creek		S		S		NA	S	2		
LP2-10120	Clear Creek		I		S		NA	I	5	Aquatic Life (Ammonia)	
LP2-10121	Johnson Creek		I		NA		NA	I	5	Aquatic Life - Impaired Aquatic Community (Unknown), (May-June Atrazine)	Aquatic Community Assessment completed
LP2-10130	Clear Creek		S		S		NA	S	2		
LP2-10140	Silver Creek		I		S		S	I	5	Aquatic Life - Impaired Aquatic Community (Unknown)	Aquatic Community Assessment completed
LP2-10150	Mosquito Creek		S		S		NA	S	2		
LP2-10160	Sand Creek		I		S		S	I	5	Aquatic Life (May-June Atrazine)	Aquatic Community Assessment completed
LP2-10161	Duck Creek		S		S		S	S	1		Aquatic Community Assessment completed
LP2-10170	Sand Creek		S		S		S	S	1		Aquatic Community Assessment completed
LP2-10171	Spring Creek		NA		NA		NA	NA	3		
LP2-10180	Sand Creek		S		NA		S	S	2		Aquatic Community Assessment completed
LP2-10200	Wahoo Creek		S		S		NA	S	2		
LP2-10210	Cottonwood Creek		I		S		NA	I	5	Aquatic Life - Impaired Aquatic Community (Unknown)	Aquatic Community Assessment completed

Waterbody ID	Waterbody Name	Recreation	Aquatic Life	Water Supply			Aesthetics	Overall	2022 IR	Impairments (Causes)	Comments/Actions
				Public Drinking	Agricultural	Industrial					
LP2-10211	Unnamed Creek		S		NA		S	S	2		Aquatic Community Assessment completed
LP2-10220	Miller Branch		S		S		S	S	1		Aquatic Community Assessment completed
LP2-10230	North Fork Wahoo Creek		S		S		NA	S	2		
LP2-10231	Unnamed Creek		S		NA		S	S	2		Aquatic Community Assessment completed
LP2-10240	North Fork Wahoo Creek		NA		NA		NA	NA	3		
LP2-10300	Wahoo Creek		S		S		NA	S	2		
LP2-10310	Dunlap Creek		NA		NA		NA	NA	3		
LP2-10400	Wahoo Creek		S		NA		S	S	2		Aquatic Community Assessment completed
LP2-10500	Callahan Creek		I		NA		NA	I	4c	Aquatic Life - Iron (Naturally Elevated)	
LP2-10600	Robinson Creek		I		NA		NA	I	4c	Aquatic Life - Iron (Naturally Elevated)	
LP2-10700	Greenwood Creek		I		NA		NA	I	4c	Aquatic Life - Iron (Naturally Elevated)	
LP2-10800	Dee Creek		I		NA		S	I	4c	Aquatic Life - Iron (Naturally Elevated)	Aquatic Community Assessment completed
LP2-10900	Camp Creek		I		NA		S	I	4c	Aquatic Life - Iron (Naturally Elevated)	Aquatic Community Assessment completed

Waterbody ID	Waterbody Name	Recreation	Aquatic Life	Water Supply			Aesthetics	Overall	2022 IR	Impairments (Causes)	Comments/Actions
				Public Drinking	Agricultural	Industrial					
LP2-11000	Rock Creek		I		S		S	I	4c	Aquatic Life - Iron (Naturally Elevated)	Fish Consumption Assessment completed, Aquatic Community Assessment completed
LP2-11010	North Fork Rock Creek		I		NA		S	I	4c	Aquatic Life - Iron (Naturally Elevated)	Aquatic Community Assessment completed
LP2-11100	Rock Creek		S		NA		S	S	2		Aquatic Community Assessment completed
LP2-11110	Ash Hollow Creek		NA		NA		NA	NA	3		
LP2-11120	Little Rock Creek		NA		NA		NA	NA	3		
LP2-11200	Rock Creek		NA		NA		NA	NA	3		
LP2-20000	Salt Creek	I	I				S	I	5	Recreation (E. coli), Aquatic Life (Aluminum)	E. coli TMDL approved 9/07, Aquatic Community Assessment completed, Fish Consumption Assessment completed
LP2-20100	Jordan Creek		NA		NA		NA	NA	3		
LP2-20200	Stevens Creek		S		S		NA	S	2		
LP2-20300	Little Salt Creek		I				S	I	5	Aquatic Life - Impaired Aquatic Community (Unknown), (Copper, Ammonia)	Aquatic Community Assessment completed
LP2-20400	Dead Man's Run	I	I		S		S	I	5	Recreation (E. coli), Aquatic Life - Dissolved Oxygen (Unknown), pH	E. coli TMDL approved 9/07
LP2-20500	Oak Creek	I	I				S	I	5	Recreation (E. coli), Aquatic Life - Fish Consumption Advisory (Mercury), (Chloride)	E. coli TMDL approved 9/07, Fish Consumption Assessment completed

Waterbody ID	Waterbody Name	Recreation	Aquatic Life	Water Supply			Aesthetics	Overall	2022 IR	Impairments (Causes)	Comments/Actions
				Public Drinking	Agricultural	Industrial					
LP2-20510	Elk Creek		S		S		NA	S	2		
LP2-20511	West Oak Creek		NA		NA		NA	NA	3		
LP2-20520	Elk Creek		NA		NA		NA	NA	3		
LP2-20600	Oak Creek	I	I		S		S	I	5	Recreation (<i>E. coli</i>), Aquatic Life - Impaired Aquatic Community (Unknown)	Aquatic Community Assessment completed
LP2-20610	North Oak Creek		S		NA		S	S	2		Aquatic Community Assessment completed
LP2-20611	Wagon Tongue Creek		NA		NA		NA	NA	3		
LP2-20612	Bates Branch		S		NA		S	S	2		Aquatic Community Assessment completed
LP2-20700	Oak Creek		S		NA		S	S	2		Aquatic Community Assessment completed
LP2-20710	Middle Oak Creek		I		S		S	I	5	Aquatic Life (May-June Atrazine)	Aquatic Community Assessment completed
LP2-20800	Oak Creek		I		S		S	I	5	Aquatic Life (May-June Atrazine)	
LP2-20900	Antelope Creek	S	I				S	I	5	Aquatic Life (Copper)	E. coli and Ammonia TMDLs approved 9/07
LP2-21000	Middle Creek		S		S		S	S	1		Aquatic Community Assessment completed
LP2-21010	South Branch Middle Creek		NA		NA		NA	NA	3		

Waterbody ID	Waterbody Name	Recreation	Aquatic Life	Water Supply			Aesthetics	Overall	2022 IR	Impairments (Causes)	Comments/Actions
				Public Drinking	Agricultural	Industrial					
LP2-21100	Middle Creek		I		S		S	I	4a	Aquatic Life (May-June Atrazine)	Atrazine TMDL approved 9/07
LP2-21200	Haines Branch		S				NA	S	2		
LP2-21210	Holmes Creek		S		S		S	S	1		
LP2-21300	Haines Branch		NA		NA		NA	NA	3		
LP2-21310	Cheese Creek		NA		NA		NA	NA	3		
LP2-21400	Haines Branch		NA		NA		NA	NA	3		
LP2-21500	Beal Slough	I	S		S		S	I	5	Recreation (<i>E. coli</i>)	
LP2-30000	Salt Creek	I	I		S		S	I	5	Recreation (<i>E. coli</i>), Aquatic Life - Impaired Aquatic Community (Unknown)	E. coli TMDL approved 9/07, Fish Consumption Assessment completed, Aquatic Community Assessment completed
LP2-30100	Cardwell Branch	I	S		S		NA	I	5	Recreation (<i>E. coli</i>)	
LP2-30200	Hickman Branch		S		NA		S	S	2		Aquatic Community Assessment completed
LP2-40000	Salt Creek		S		S		NA	S	2		
LP2-40100	Wittstruck Creek		NA		NA		NA	NA	3		
LP2-40200	Spring Branch		NA		NA		NA	NA	3		

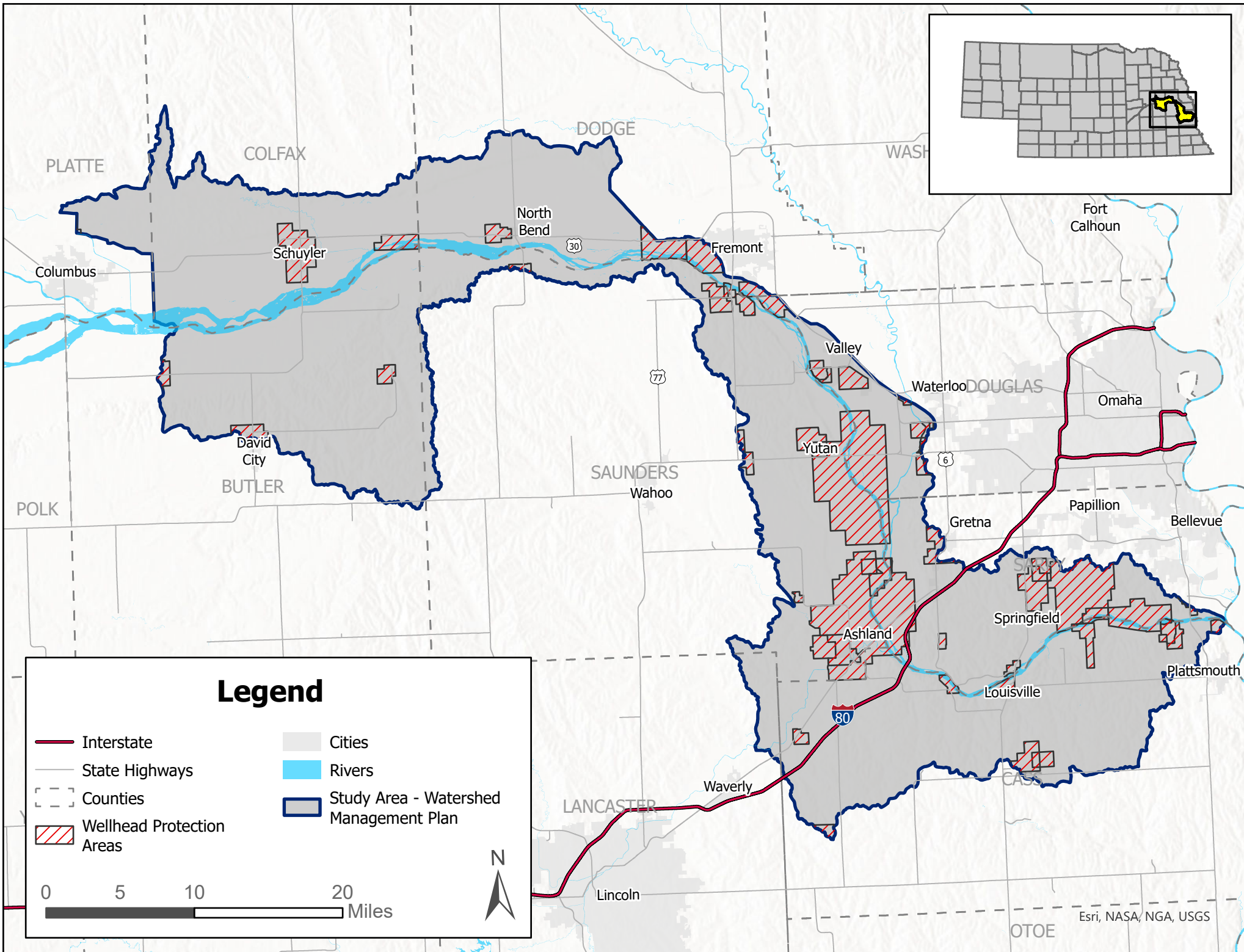
Waterbody ID	Waterbody Name	Recreation	Aquatic Life	Water Supply			Aesthetics	Overall	2022 IR	Impairments (Causes)	Comments/Actions
				Public Drinking	Agricultural	Industrial					
LP2-40300	Olive Branch		I		S		NA	I	5	Aquatic Life - Impaired Aquatic Community (Unknown)	Aquatic Community Assessment completed
LP2-40310	North Branch		S		NA		S	S	2		Aquatic Community Assessment completed

***Cancer risk compounds** -Aroclor-1248 (PCB-1248), Aroclor-1254 (PCB-1254), Aroclor-1260 (PCB-1260), cis-chlordane, Chlordane, trans-chlordane, DDD, DDE, DDT, Dieldrin, Heptachlor, Heptachlor Epoxide, Hexachlorobenzene, cis-nonachlor, trans-nonachlor, Oxychlordane, Pentachloroanisole, Trifluralin




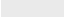

***Hazard index compounds**- Aroclor-1254 (PCB-1254), Lindane (g-BHC), cis-chlordane, Chlordane, trans-chlordane, DDT, Dieldrin, Heptachlor, Heptachlor Epoxide, Hexachlorobenzene, cis-nonachlor, trans-nonachlor, Oxychlordane, Pentachloroanisole, Trifluralin, Mercury, Cadmium, Selenium

¹ XXX# designates in Title 117 an undesignated waterbody. See Title 117 Chapter 2.004.

ATTACHMENT 3
REVISED FIGURE 9. WELLHEAD PROTECTION
AREAS



Legend

-  Interstate
-  State Highways
-  Counties
-  Wellhead Protection Areas
-  Cities
-  Rivers
-  Study Area - Watershed Management Plan

0 5 10 20 Miles

